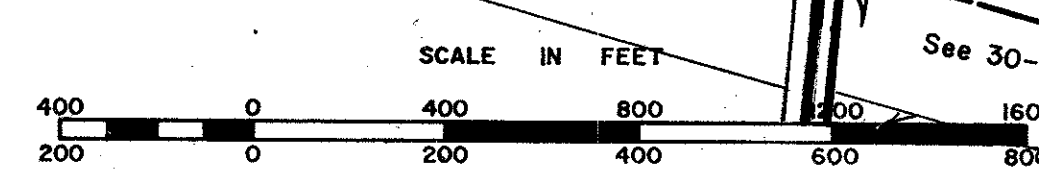
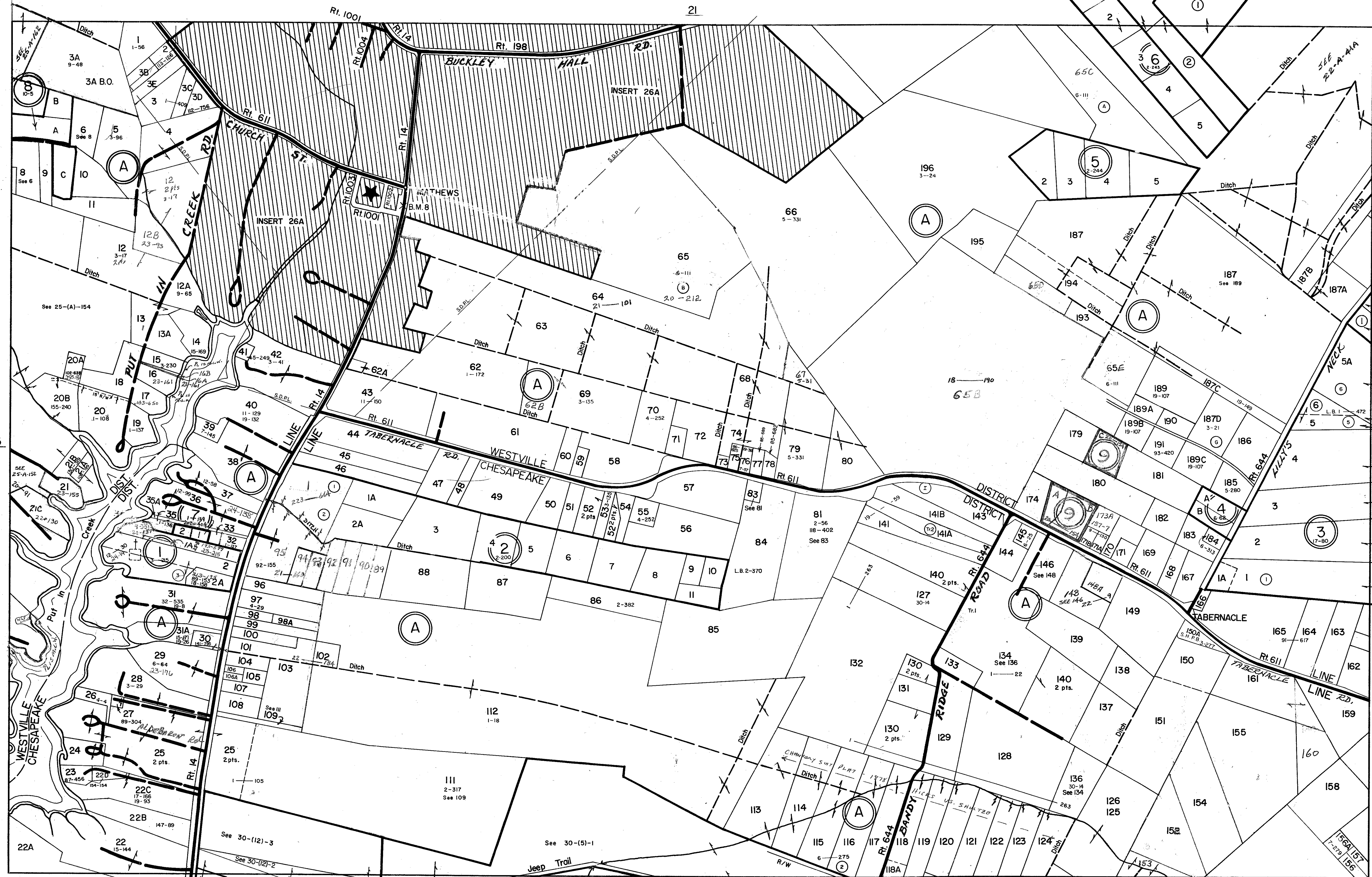


MATHEWS COUNTY

21



REVISED: 6-8-92 Wingate Appraisal & Mapping Service, Roanoke, Va. 1/1/87, 1/1/90, 10/92

WESTVILLE CHESAPEAKE DISTRICT

SECTION 26
INSERT

PREPARED BY VIRGINIA STATE DEPARTMENT OF TAXATION, DIVISION OF REAL ESTATE APPRAISAL AND MAPPING