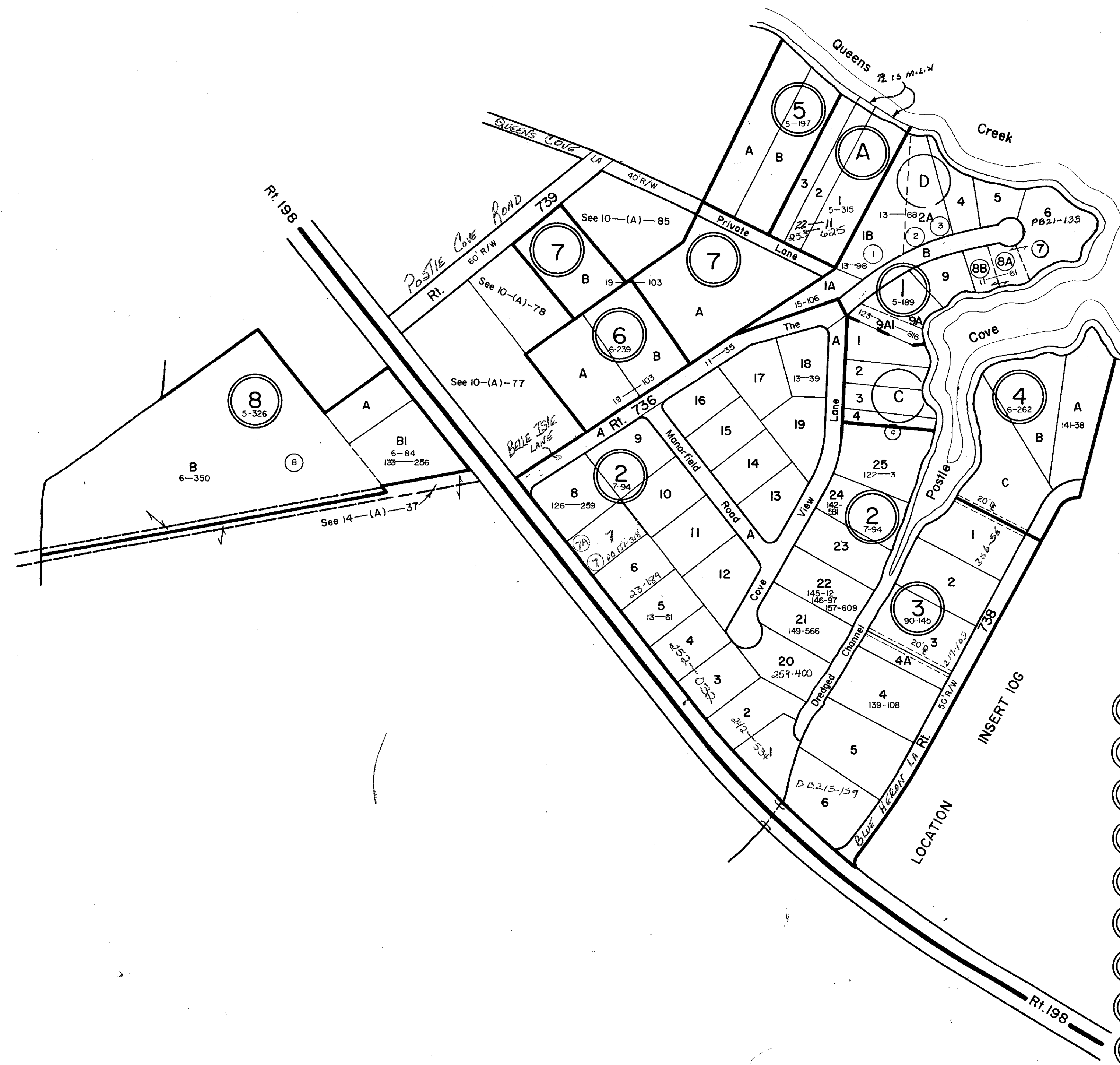
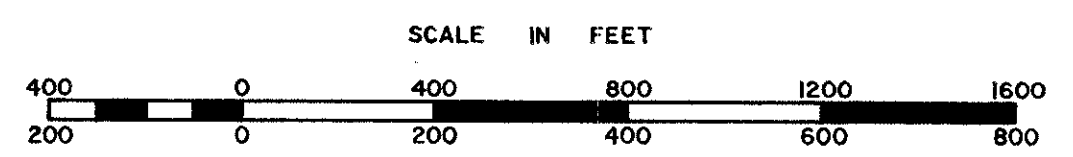


# MATHEWS COUNTY



- (A) ACREAGE PARCELS
- (1) THE QUEENS ESTATES—P.B.5, Pg. 189
- (2) THE QUEENS ESTATES—RESUBDIVISION—P.B. 7, Pg. 94
- (3) QUEENS RIVER ESTATES, INC.—D.B.90, Pg. 145
- (4) QUEENS RIVER ESTATES PLAT—P.B. 6, Pg. 262
- (5) CLARKE PLAT—P.B. 5, Pg. 197
- (6) WARD PLAT—P.B. 6, Pg. 239
- (7) WARD PLAT—UNRECORDED
- (8) WILSON E. & EVANGELINE C. ARMISTEAD—P.B.5, Pg. 326



PIANKATANK DISTRICT

SECTION \_\_\_\_\_  
 INSERT IOC

REVISED: by Wingate Appraisal & Mapping Service, Roanoke, Virginia 1/1/87, 1/1/90, 10/92

PREPARED BY VIRGINIA STATE DEPARTMENT OF TAXATION, DIVISION OF REAL ESTATE APPRAISAL AND MAPPING