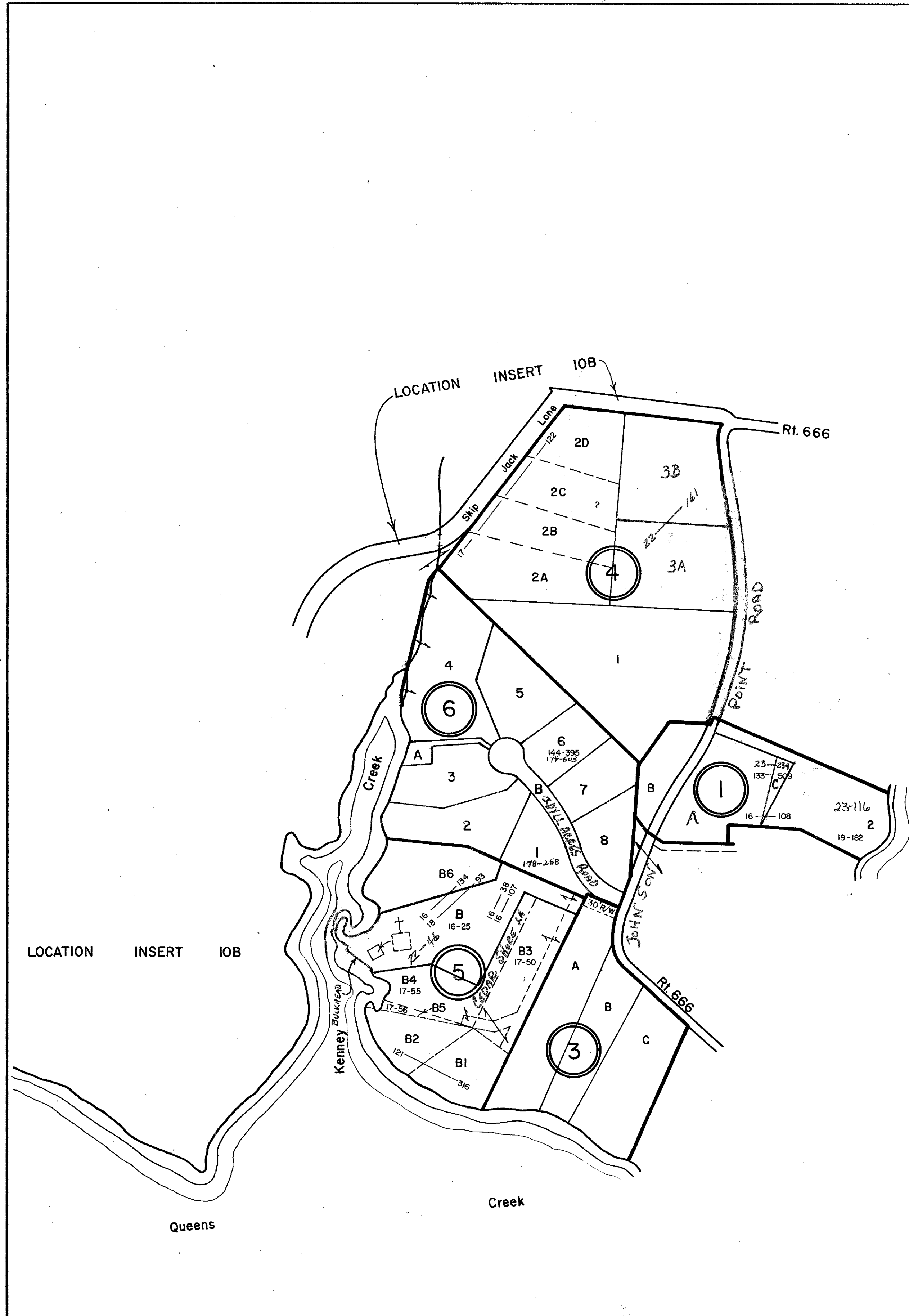
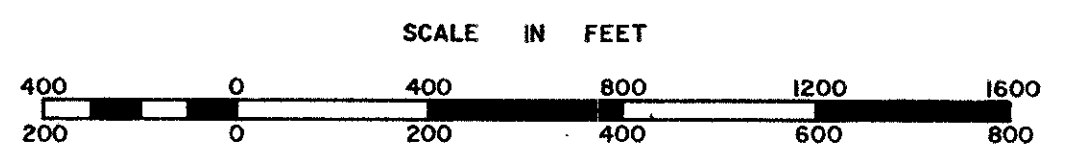


MATHEWS COUNTY



- ① HUDGINS PLAT—PB. 6, Pg. 229
- ② HUDGINS PLAT—PB. 5, Pg. 64, COMBINED WITH ① BY P. B. 16, Pg. 108
- ③ W. P. LEWIS AND RACHEL L. SHACKELFORD PLAT—PB. 7, Pgs. 19, 50
- ④ RESPESS PLAT—PB. 5, Pg. 90; PB. 10, Pg. 58
- ⑤ SCHROEDER PLAT—PB. 4, Pg. 320
- ⑥ IDYLL ACRES PLAT—PB. 8, Pg. III; PB. 9, Pg. 25



PREPARED BY VIRGINIA STATE DEPARTMENT OF TAXATION, DIVISION OF REAL ESTATE APPRAISAL AND MAPPING

REVISED: 5-10-82, by Wingate Appraisal & Mapping Service, Roanoke, Virginia 1/1/87, 1/1/90, 10/92

PIANKATANK DISTRICT

SECTION _____
 INSERT IOE