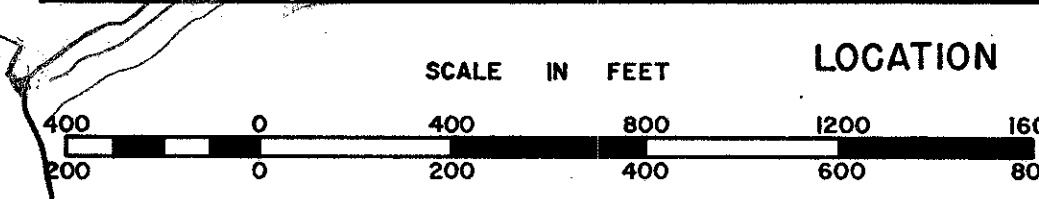
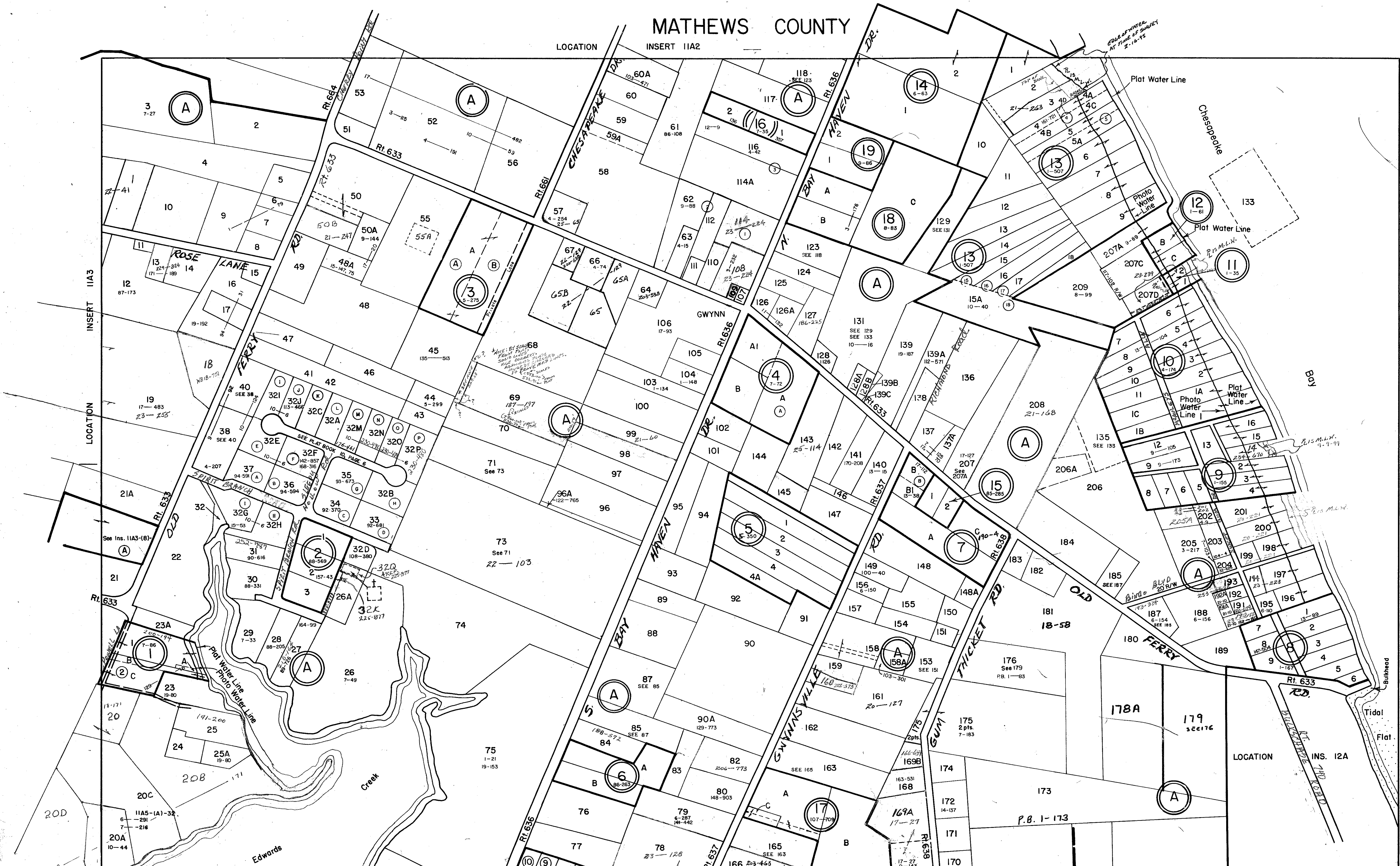


MATHEWS COUNTY

LOCATION INSERT 11A2



- LOCATION
- (A) ACREAGE PARCELS
 - (1) POWELL DIVISION - PB.7, Pg. 86
 - (2) J. LEWIS JAGGER LAND-D.B. 88, Pg. 569
 - (3) ARNOLD PLAT - P.B. 5, Pg. 275
 - (4) ROWE - FOSTER PLAT - P.B. 7, Pg. 72
 - (5) MANSELL R. & ELEANOR T. STEVENS PLAT - P.B. 5, Pg. 350

- INSERT
- (6) MARY A. HANCOCK PLAT - D.B. 86, Pg. 263
 - (7) HODGES PLAT - P.B. 6, Pg. 175
 - (8) IDA MILES ADAMS & G. E. ABER SOLD PLAT - P.B. 1, Pg. 167
 - (9) W. L. HOGAN, SR. PLAT - P.B. 1, Pg. 155
 - (10) WATKINS P & MILDRED E. ALLISON PLAT - P.B. 4, Pg. 174
 - (11) O. B. CROSS PLAT - P.B. 1, Pg. 35

SECTION INSERT 11A4

- (12) CROSS SMITH, STEVENSON & EVERETT LAND - REVISION CROSS PLAT LOTS 3-7 - P.B. 1, Pg. 62 L.B. 1, Pg. 507
- (13) HUBBARD PLAT - P.B. 6, Pg. 63
- (14) SPENCER R. HODGES, JR. LAND - D.B. 85, Pg. 285
- (15) L. GRANVILLE OWENS LAND - P.B. 7, Pg. 35