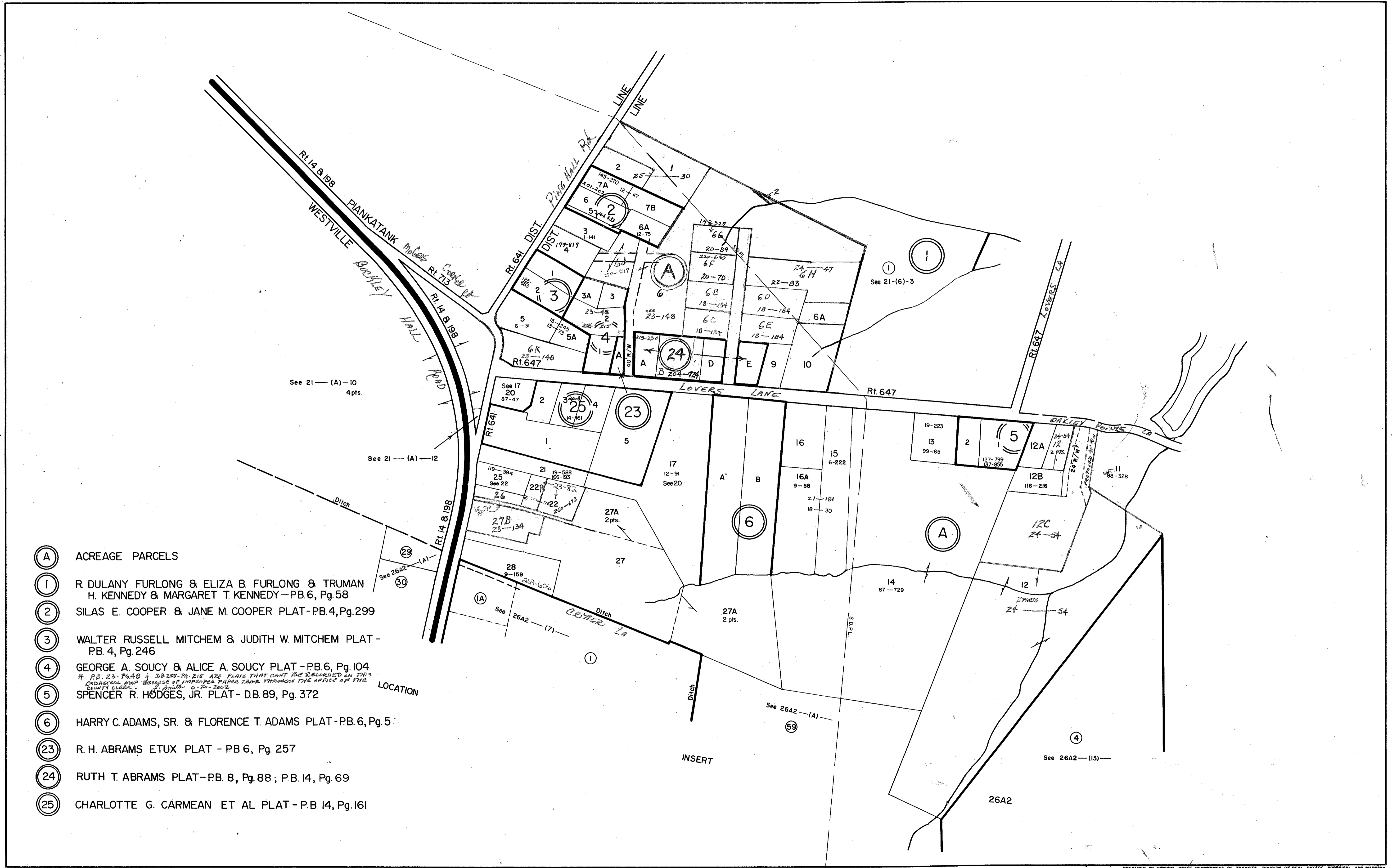
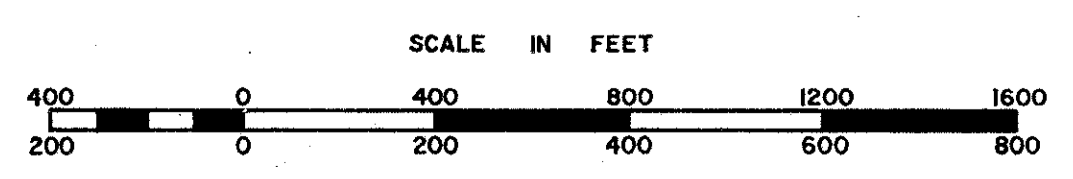


MATHEWS COUNTY



- (A) ACREAGE PARCELS
- (1) R. DULANY FURLONG & ELIZA B. FURLONG & TRUMAN H. KENNEDY & MARGARET T. KENNEDY - P.B. 6, Pg. 58
- (2) SILAS E. COOPER & JANE M. COOPER PLAT - P.B. 4, Pg. 299
- (3) WALTER RUSSELL MITCHEM & JUDITH W. MITCHEM PLAT - P.B. 4, Pg. 246
- (4) GEORGE A. SOUCY & ALICE A. SOUCY PLAT - P.B. 6, Pg. 104
* P.B. 23 - Pgs. 48 & 202-203 - Pgs. 215 ARE PLATS THAT CANNOT BE RECORDED ON THIS CADASTRAL MAP BECAUSE OF IMPROPER PARCELS TAKEN THROUGH THE OFFICE OF THE COUNTY CLERK - 6-20-2002
- (5) SPENCER R. HODGES, JR. PLAT - D.B. 89, Pg. 372
- (6) HARRY C. ADAMS, SR. & FLORENCE T. ADAMS PLAT - P.B. 6, Pg. 5
- (23) R. H. ABRAMS ETUX PLAT - P.B. 6, Pg. 257
- (24) RUTH T. ABRAMS PLAT - P.B. 8, Pg. 88 ; P.B. 14, Pg. 69
- (25) CHARLOTTE G. CARMEAN ET AL PLAT - P.B. 14, Pg. 161



WESTVILLE DISTRICT

SECTION 26A1
INSERT 26A1