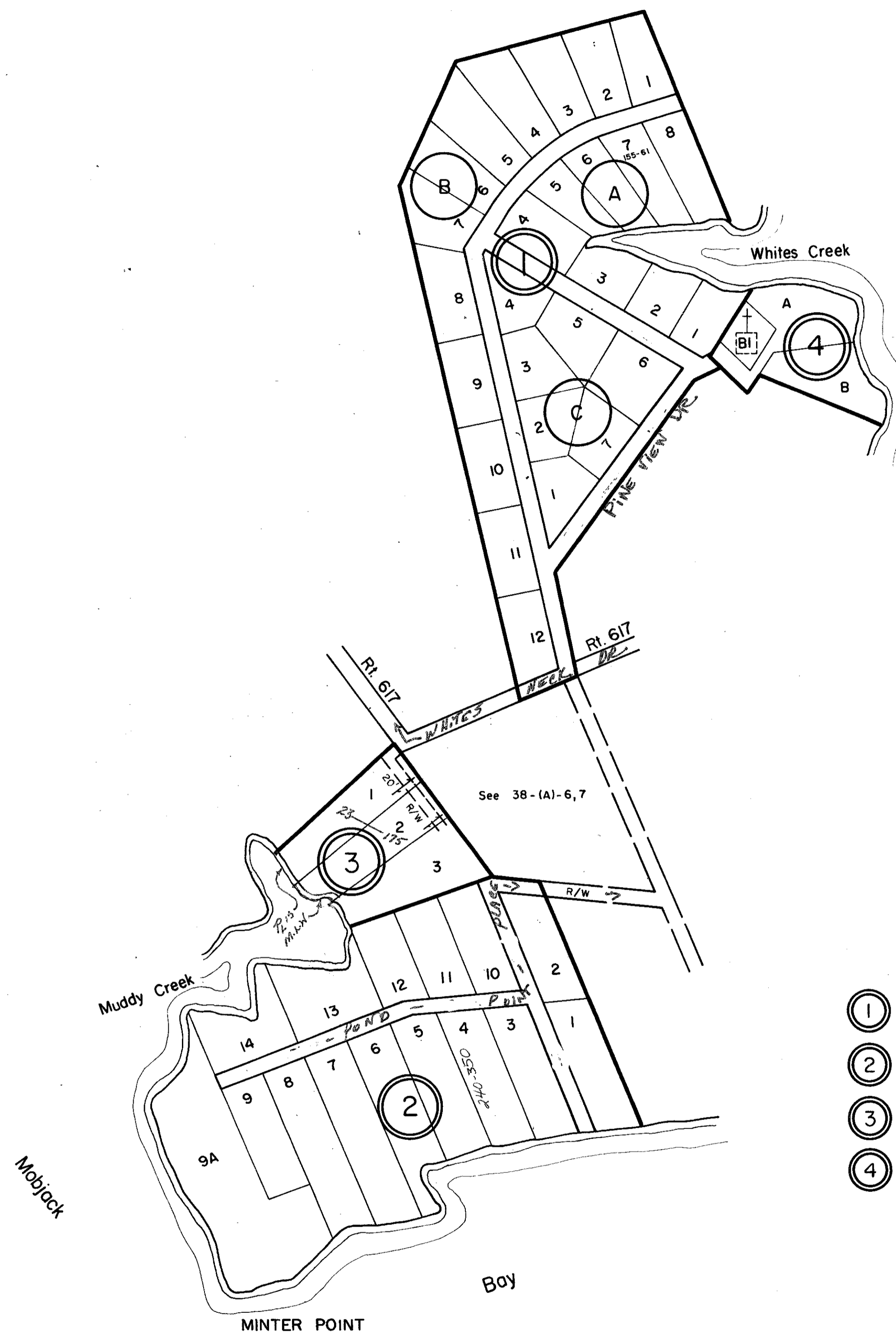
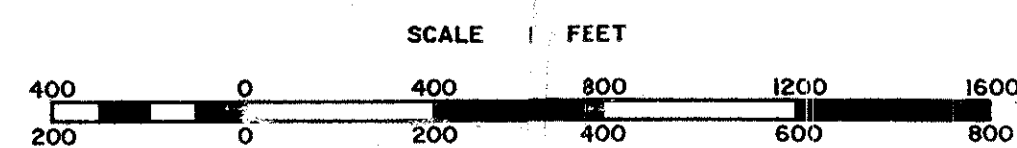


MATHEWS COUNTY



- ① LAGUNA COVE ESTATES-SECTION I- P.B. 6, Pg. 303
- ② BAY VIEW BEACH- P.B. 4, Pg. 10
- ③ JAMES B. & BESSIE W. JOHNSTON LAND-D.B. 85, Pg. 497
- ④ JAMES BROOKS & BESSIE W. JOHNSTON PLAT- P.B. 6, Pg. 114



WESTVILLE DISTRICT

SECTION 38A
INSERT