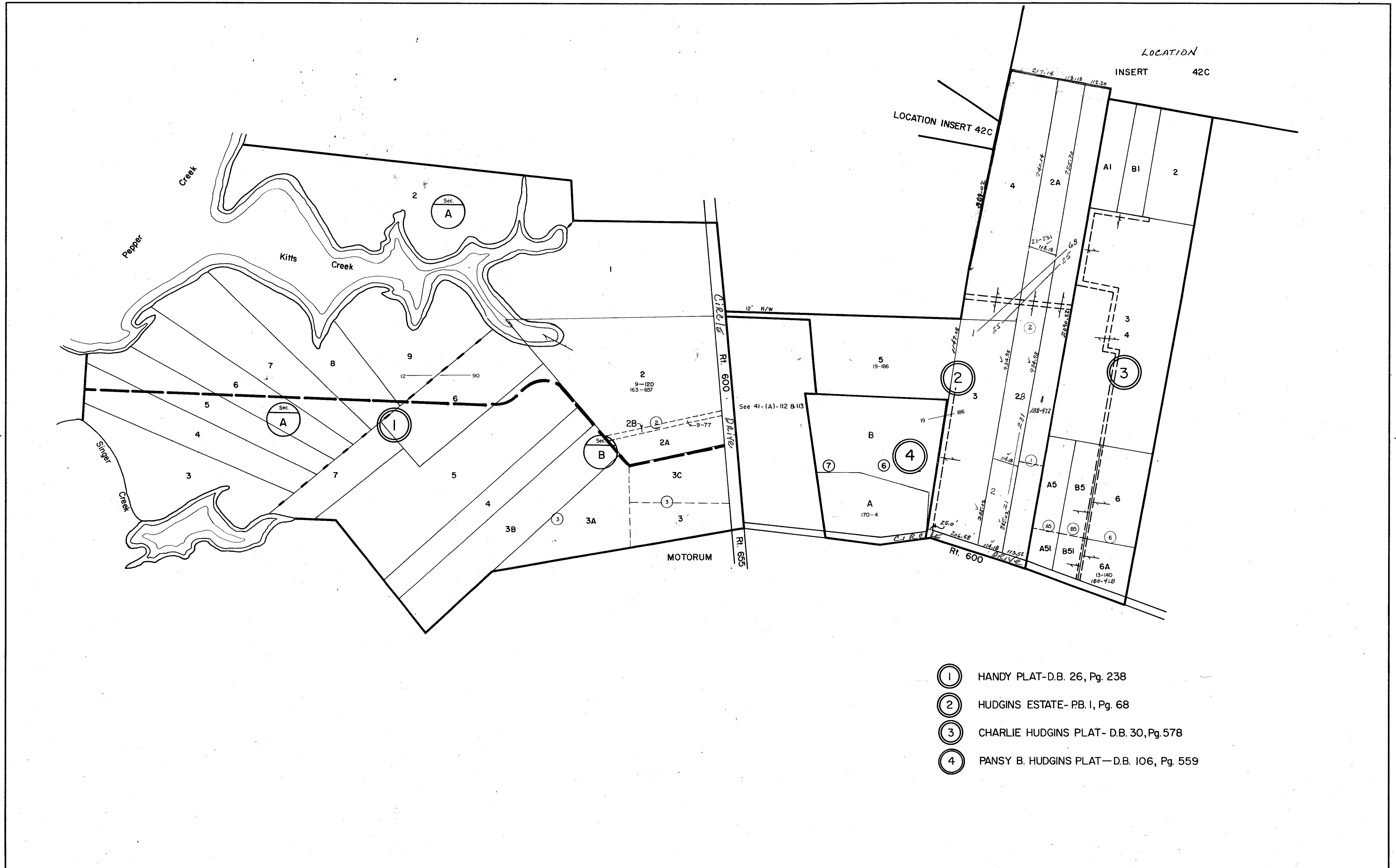
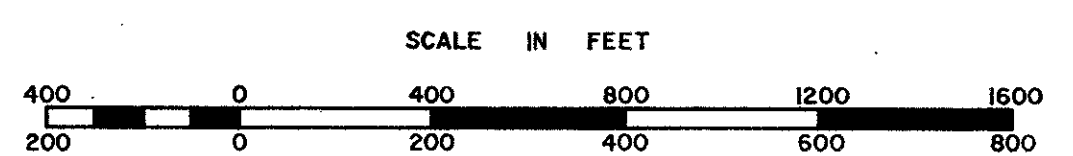


MATHEWS COUNTY



- ① HANDY PLAT-D.B. 26, Pg. 238
- ② HUDGINS ESTATE- PB. I, Pg. 68
- ③ CHARLIE HUDGINS PLAT- D.B. 30, Pg. 578
- ④ PANSY B. HUDGINS PLAT—D.B. 106, Pg. 559



REVISED: 7-2-82 by Wingate Appraisal & Mapping Service, Roanoke, Virginia 1/1/87, 1/1/90, 10/92

CHESAPEAKE DISTRICT

PREPARED BY VIRGINIA STATE DEPARTMENT OF TAXATION, DIVISION OF REAL ESTATE APPRAISAL AND MAPPING

SECTION
INSERT 41A